

230_{VAC}24_{VDC}


PREMIER PREMIER24

ARTICULATED ARM

personalised release key

up to 4.0 m

BENINCA


100%
Made in Italy


CONTROL UNITS:

PR.45E — BRAINY HEADY

PR.45EL — BRAINY HEADY

PR.45E24 — BRAINY24+
BRAINY24

Irreversible geared motor suitable for gates installed on large columns, available in 230 Vac and 24 Vdc versions. Built-in electromechanical open and close limit switches, with sturdy articulated anti-shearing arm in galvanised steel.

Arm not included

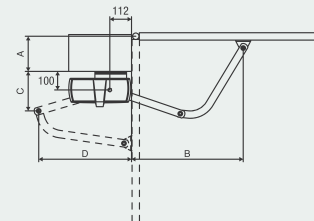
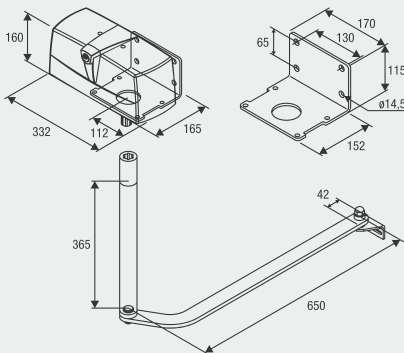
230 Vac

- Irreversible 230 Vac electromechanical geared motor also available in the PR.45EL version for large doors

24 Vdc | intensive use

- Irreversible 24 Vdc geared motor for intensive use
- Amperometric sensor obstacle detection system to prevent crushing
- Optional battery powered operation

www.beninca.com



A (mm)	B (mm)	C (mm)	D (mm)
50	883	277	429
150	851	181	466
200	828	117	475
250	800	32	469
300	846	28	468

BENINCA

COMPLETE KITS



MOTORS

KPR 2x **PR.45E**
KPR.24 2x **PR.45E24**


CONTROL UNIT

 1x **HEADY**
 1x **BRAINY24**


ARMS

 2x **DU.E2**
 2x **DU.E2**


PHOTOCELLS

 1x **PUPILLA.R**
 1x **PUPILLA.R**


FLASHING LIGHT

 1x **LAMPI.LED**
 1x **LAMPI24.LED**


SELECTOR

 1x **TOKEY**
 1x **TOKEY**


TRANSMITTER

 1x **TO.GO2VA**
 1x **TO.GO2VA**



DU.E2
Single galvanized steel arm.



MB.SE
Externally fitted anti-intrusion cable unlock device which allows the gate to be unlocked from outside.



DU.V96
12 Vac/dc vertical electric lock, supplied with counterplate. Permits internal/external release.



DU.V90
12 Vac/dc horizontal electric lock, supplied with counterplate. Permits internal/external release.



DU.9990
Covering plate for DU.V90.



E.LOCK
230 Vac vertical electric lock, supplied with counterplate.



E.LOCKSE
Extended cylinder for E.LOCK electric lock. It allows unlocking gates up to 55mm-thick from the outside.



ID.TA
Warning board.



IRI.TX4VA
4-channel transmitter with Advanced Rolling Code and Rolling Code.



IRI.TX4AK
4-channel transmitter with Advanced Rolling Code and Fixed Code.



IRI.LAMP
White full range flashing light, 20-255 VAC with built-in aerial.



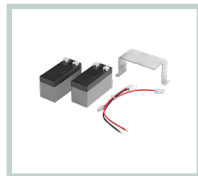
IRI.KPAD
Battery operated wireless vandal-proof digital keypad with alert buzzer and backlit buttons. Triple coding: Rolling Code, Programmable Code and Advanced Rolling Code. 254 memorisable codes.



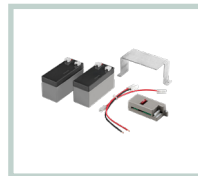
IRI.CELL
Pair of vandal-proof metal covers for PUPILLA/PUPILLA.R photocells, comprising front and rear shells with concealed screw. They can maintain perfect orientation over 180°.



PUPILLA
Pair of photocells adjustable to 180°. Option to synchronise up to 4 pairs, 24 VAC/DC power supply. Easy adjustment through a LED that signals optimal alignment. Compact size: 36x110x35 mm



BRAINY24.CB-SW
Accessory equipped with 1.2 Ah batteries and support bracket.



BRAINY24.CB
Accessory with CBY.24V battery charger, 1.2 Ah batteries and support bracket.

AUTOMATISMI BENINCÀ SpA • Via del Capitello, 45 • 36066 Sandrigo (VI) ITALY • T +39 0444 751030 • sales@beninca.com

TECHNICAL DATA	PR.45E*	PR.45EL	PR.45E24*
Power supply	230 Vac (50-60Hz)	230 Vac (50-60Hz)	230 Vac (50-60Hz)
Motor supply	230 Vac	230 Vac	24 Vdc
Max absorbed current	1.75 A	1.45 A	9 A
Torque	325 Nm	300 Nm	320 Nm
Opening time	13"	20"	9"
Duty cycle	30%	30%	intensive use
Protection level	IP44	IP44	IP44
Operating temperature	-20°C /+50°C	-20°C /+50°C	-20°C /+50°C
Leaf max dimension	3 m	4 m	3 m
Weight	10.5 kg	10.5 kg	9 kg
Items no. per pallet	42	42	42
Kit weight	34.6 kg	---	34 kg
Kits no. per pallet	12	---	12

* Available in 115 VAC version